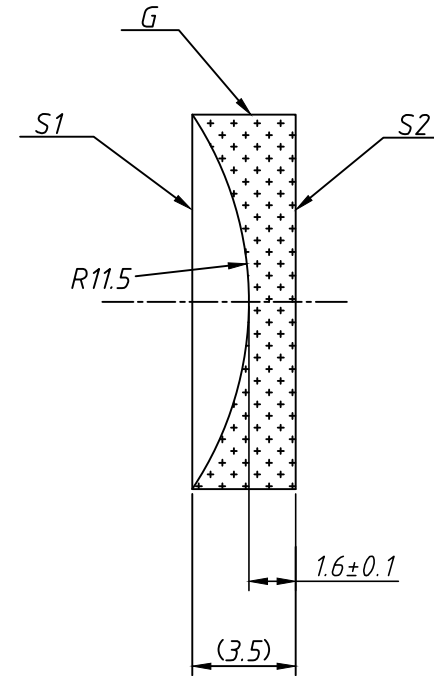
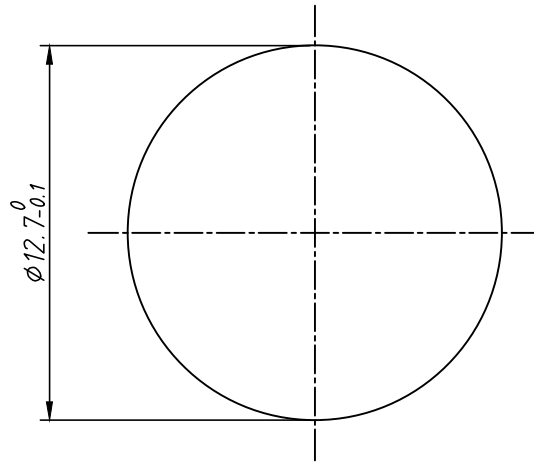


Isometric view 1: 1



Notes:

1. Materials: C7980 0F
2. Design Wavelength: 587.6nm
3. Focal Length: $f = -25.0\text{mm} \pm 1\%$
4. Back Focal Length(REF): $bf = -26.1\text{mm}$
5. Centration error: ≤ 2 arcmin
6. Clear aperture: $\geq 90\%$
7. G - Fine ground surface
8. Coating: AR/AR@1100nm~1650nm(REFER TO COATING CURVES)
9. All dimensions are in mm

Parameters			SHALOM EO www.shalomeo.com	UVFS Plano-concave D=12.7 F=-25 WITH AR@1100~1650nm COATING					
	S1	S2		Proprietary	Name	Date	Part number	Rev	Scale
Shape	Convex	Plano							
Radius of curvature	-11.46	Infinity		The drawing is property of Hangzhou Shalom EO, any reproduction in part or as a whole without permission is prohibited.	DRAWN	YSF	27/Apr/20	1104-004	A
Surface quality	10/5 S/D	10/5 S/D	APPROVAL		JT	27/Apr/20			
Surface Irregularity	$\lambda/10@632.8\text{nm}$	$\lambda/10@632.8\text{nm}$							
Power(P-V)	$3\lambda/2@632.8\text{nm}$	$\lambda/2@632.8\text{nm}$							
Protective chamfers	0.2mm x 45°	0.2mm x 45°							